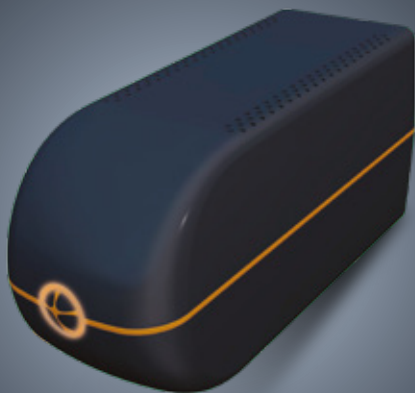


LITE II
650/850 VA
UNINTERRUPTIBLE POWER SUPPLY
UPS

USER MANUAL



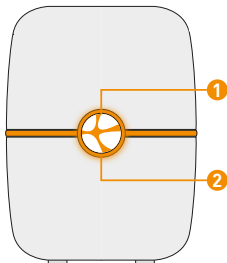
This UPS is specially designed for Personal Computers with multi-functions. Its light weight, compact design perfect fits to the limited working environment. The line of UPS is equipped with boost and buck AVR to stabilize input voltage range. It is also built-in with DC start function. This function enables the UPS to be started up without AC power supplied. The main features of UPS are listed below:

- Compact size, light weight.
- Microprocessor control guarantees high reliability.
- Equipped with Boost and Buck AVR.
- Green Power Function for energy saving.
- DC Start Function. (Cold Start)
- Provides AC Overload protection.



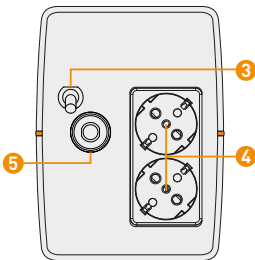
INTRODUCTION

Front Panel



Lite II 650
Lite II 850

Back Panel



-
1. Smart On/Off Button
 2. AC Mode: Green Lighting
Battery Mode: Orange Flashing
Fault: Red Lighting

3. AC Input
4. Output Receptacles
5. Circuit Breaker

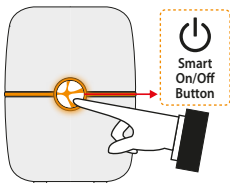


Smart On/Off Button Technology (Alarm Silence Function)

Press the smart button for minimum 1 second to turn the UPS unit on. If mains is cut off when UPS is working, UPS starts working in battery mode and gives audible alarm. If you press smart button once, UPS audible alarm stops (Alarm Silence Function).

If the smart button is pressed once again, the alarm starts again.

After UPS alarm is silenced, when battery capacity drops to a critical level the audible alarm starts automatically again and cannot be silenced. Press the smart button until the LED turn into red then remove your finger to shut down the UPS unit.



1. Inspection

Remove the UPS from its packaging and inspect it for damage that may have occurred during shipping. If any damage is discovered, repack the unit and return it to the place of purchase.

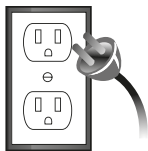


2. Charging

This unit is shipped from the factory with its internal battery fully charged, however, some charge may be lost during shipping and the battery should be recharged prior to use.

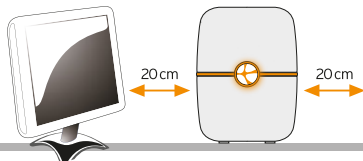
Turn on the UPS, Plug the unit into an appropriate power supply and allow the UPS to charge fully by leaving it plugged in for at least 6 hours with no load (no electrical devices such as computers, monitors, etc.) connected.

Green LED flashes while UPS charging.



3. Placement

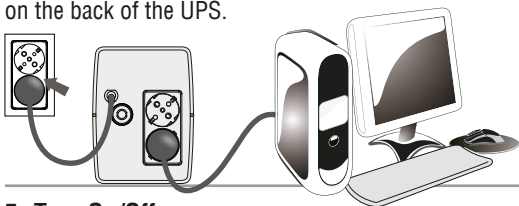
Install the UPS unit in any protected environment that provides adequate airflow around the unit, and is free from excessive dust, corrosive fumes and conductive contaminants. Do not operate your UPS in an environment where the ambient temperature or humidity is high.



On the other hand, place the UPS away from the monitor at least 20 cm to avoid interference.

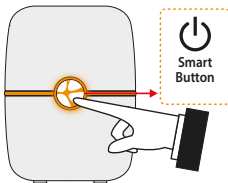
4. Connection

Plug the UPS into a 2-pole, 3-wire grounded receptacle. Then connect one computer-related device into each of the power receptacles supplied on the back of the UPS.



5. Turn On/Off

• Press the smart button for minimum 1 second to turn the UPS unit on. • Press the smart button until the LED turn into red then remove your finger to shut down the UPS unit.



6. DC Start

All Series are equipped with DC Start (Cold Start). To start the UPS when AC utility power is not available, simply press the smart button for minimum 1 second.

SAFETY - WARNING



This UPS utilizes voltages that may be hazardous. Do not attempt to disassemble the unit. The unit contains no user serviceable parts. Only factory service personnel may perform repairs.

Internal battery voltage is 12Vdc. Sealed, lead-acid, 6 cells battery. Connection to any other type of receptacle other than a two-pole, three-wire grounded receptacle may result in shock hazard as well as violate local electrical codes.

In the event of an emergency, press the Smart On/Off Button for 4 seconds and disconnect the power cord from the AC power supply to properly disable the UPS.

Do not allow liquids or any foreign object to enter the UPS. Do not place beverages or any other liquid-containing vessels on or near the unit.

This unit intended for installation in a controlled environment (temperature controlled, indoor area free of conductive contaminants). Avoid installing the UPS in locations where there is standing or running water, or excessive humidity.

Do not plug the UPS input into its own output.

Do not attach a power strip or surge suppressor to the UPS.

Do not attach to non-computer-related items, such as medical equipment, life-support equipment, microwave ovens, vacuum cleaners, laser printers or washing machine.

To reduce the risk of overheating the UPS, do not cover the UPS cooling vents and avoid exposing the unit to direct sunlight or installing the unit near heat emitting appliances such as space heaters or furnaces.

Unplug the UPS prior to cleaning and do not use liquid or spray detergent.

Do not dispose of batteries in a fire as they may explode.

Do not open or mutilate the battery or batteries. Released electrolyte is harmful to the skin and eyes. It may be toxic.

Attention, hazardous through electric shock. Also with disconnection of this unit from the mains, hazardous voltage still may be accessible through supply from battery. The battery supply should be therefore disconnected in the plus and minus pole of the battery when maintenance or service work inside the UPS is necessary.

Servicing of batteries should be performed by authorized personnel. Keep unauthorized personnel away from batteries.

A battery can present a risk of electrical shock and high short circuit current. The following precautions should be observed when working on batteries:

- 1) Remove watches, rings, or other metal objects from the hands.**
- 2) Use tools with insulated handles.**
- 3) Wear rubber gloves and boots.**
- 4) Do not lay tools or metal parts on top of batteries.**
- 5) Disconnect charging source prior to connecting or disconnecting batteries terminals.**

When replacing batteries, replace with the same number and type of sealed lead-acid battery. The maximum ambient temperature rating is 40°C.

This pluggable type A equipment with battery already installed by the supplier is operator installable and may be operated by laymen.

During the installation of this equipment it should be assured that the sum of the leakage currents of the UPS and the connected loads does not exceed 3.5 mA.

The mains socket outlet that supplies the UPS shall be installed near the UPS and shall be easily accessible.

TROUBLE SHOOTING

Use the table below to solve minor problems.

Problem	Possible Cause	Solutions
No LED display on the front panel	Low battery	Charge the UPS at least 6 hours
	Battery fault	Replace the battery with the same type of battery (Please see Safety-Warning page)
	The UPS is not turned on	Press the On/Off button at least 1 second to turn on the UPS
Alarm continuously sounds when the mains is normal	The UPS is overload	Remove some loads first. Before reconnecting equipment, please verify that the load matches the UPS capability specified in the specs. (Please see Technical Specification table)
When power fails, back-up time is shorten	The UPS is overload	Remove some critical load
	Battery voltage is too low	Charge the UPS at least 6 hours
	Battery defect. It might be due to high temperature operation environment, or improper operation to battery.	Replace the battery with the same type of battery (Please see Safety-Warning page)
The mains is normal but LED color in red is flashing	Power cord is loose	Reconnect the power cord properly, if the problem can't be solved please consult nearest technical service

TECHNICAL SPECIFICATIONS

MODEL	Lite II 650 VA	Lite II 850 VA
Capacity	650 VA / 360 W	850 VA / 480 W
INPUT		
Voltage	220/230/240 VAC	
Voltage Range	162-265 VAC	
OUTPUT		
Voltage Regulation	±10%	
Transfer Time	Typical 2-6 ms, 10 ms max.	
Waveform	Simulated sine wave	
BATTERY		
Type & Number	1 X 12V 7AH	1 X 12V 9AH
Charging Time	4-6 hours recover to 90% capacity	
PHYSICAL		
Dimensions (DxWxH)	322 x 122 x 160 mm	
Net Weight (kg)	4.5 kg	5.1 kg
ENVIRONMENT		
Humidity	0-40°C 0-90% (Non-condensing)	
Noise Level	<40 dB	

Üretici & İthalatçı / Manufacturer & Importer:

Tunçmatik Elektrik Malzemeleri Sanayi ve Ticaret A.Ş.
Yenişehir Mah. İmar İskan Blokları Cad. No: 1BU
34779 Ataşehir, İstanbul, Turkey
T: +90.216.314.51.51
F: +90.216.420.35.29
info@tuncmatik.com



tuncmatikgroup
power solutions



tuncmatik
www.tuncmatik.com pure power