

NANO UPS

UNINTERRUPTIBLE POWER SUPPLY

USER MANUAL



SYSTEM DESCRIPTION

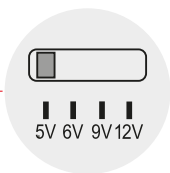
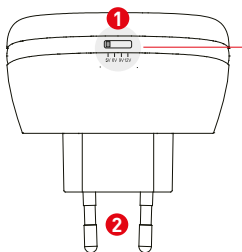
BOX CONTENT

TUNCMATIK NANO UPS

ADAPTER SOCKETS (Not available in all versions)

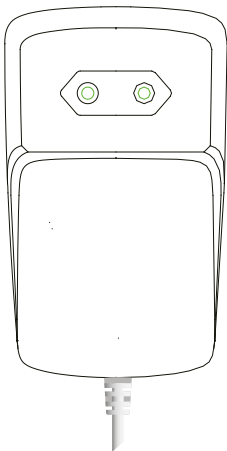
USER MANUAL

Top View

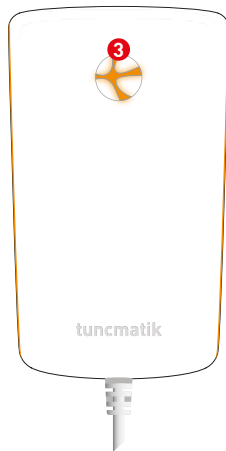


1. Output Voltage Selector
2. AC Input
3. On/Off Button with LED
4. Socket

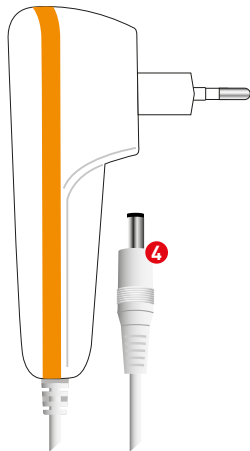
Back View



Front View



Side View



Thank you for choosing NANO UPS. The NANO UPS is designed to provide power backup to all kinds of DC-powered devices such as modems, switch, dect phone and security camera.



CAUTION! To safely operate this NANO UPS, please read and follow all instructions carefully prior to use.

TRANSPORTATION

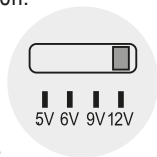
Before installation, check the appearance to see if the UPS is damaged. Do not switch on the UPS if there is any damage. Please get contact with the dealer right away.



INSTALLATION

Please determine the input voltage of the device to which you'll connect the Nano UPS (please see the rating label on the adaptor of your device). In case you're unable to determine the compatible input voltage, please get contact with your dealer or authorized technical person.

For instance; if you determine that your device is compatible to run with 12VDC, please switch the output voltage of Nano UPS to 12V from the output voltage selector. (Figure 1)



Warning: The output voltage of the Nano UPS must not be changed while it's running or connected to the plug.

Figure 1

Please connect Nano UPS to the plug. The LED on the button will light. You can run the Nano UPS by pressing 2 seconds to the button. Please connect the socket of the Nano UPS to the adaptor input of the device. Please be sure that the socket fits precisely. If not, please replace it with the other adaptor sockets in the box of Nano UPS.

In your first usage, the Nano UPS will fully charge itself within 5-8 hours when you connect it to plug.

If your device doesn't run, please unplug the socket of Nano UPS from your device and see troubleshooting chart.

Plug your NANO UPS. The LED will light on the on/off button. (Figure 2)

Operate the device by pressing the button for 2 seconds. (Figure 3)

Connect its output to the input of the adaptor of your device, i.e modem. If the socket doesn't fit tightly to the adaptor input of the device then replace it with the one fits properly. (Figure 4)

Your device will now start operating and its LED's will light. (Figure 5)

NANO UPS will be ready for uninterrupted operation after completely charging its battery in nearly 5-8 hours.

If there is no change in the status of the lights of the device, unplug the adaptor end from your device and try to find the solution by following the explanations given in the troubleshooting chart.

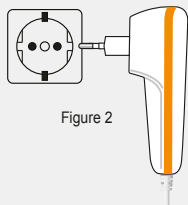


Figure 2

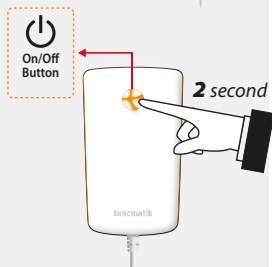


Figure 3



Figure 4

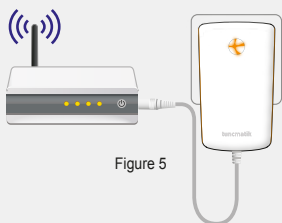


Figure 5



NANO UPS
Charging time
8 hour

TROUBLESHOOTING

Indication	Possible cause	Remedy
Button light OFF	No properly connected AC input	Ensure that the plug of the device is tightly connected to the outlet
	No energy in the socket	Check for the availability of energy in the socket
	UPS failure	Call service
Button light ON but UPS can not start up	UPS output voltage is not set correctly	Determine the correct voltage and adjust
	UPS overload	Check for the current value of the device you will operate.
	UPS failure	Call service
No battery energy when mains fail	Fully discharged battery	Charge your UPS for 5 hours and disconnect it from the mains and test it.
	UPS failure	Call service
UPS normal but loads like modem not running	Socket not properly inserted	Ensure that the socket is fully inserted into the adaptor input of the device.
	Socket not suitable to the input of the device	Connect the proper adaptor to the output of the socket
	Load adaptor input with different shape	Call service
UPS overtemperature	UPS failure or UPS overload	Shut down the UPS and call service.

TECHNICAL SPECIFICATION

Input	100-240 VAC 0.3A MAX
Output	5V DC / 2A 6V DC / 2A 9V DC /1.3A 12V DC / 1A
Capacity	6000mAh
Battery	Li-Polymer
Battery cycle	≈500 times
Battery charge time	8 hour
Over load	>%100 >15sec.
Short circuit protection	Yes
Dimensions	120 x 72 x 39 mm
Weight	265 gr



IMPORTANT SAFETY WARNING

NANO UPS designed for home and office use. Don't use outdoor.
NANO UPS uses in place with sufficient air flow.

- Do NOT install the UPS system under the wet and humid environment.
- Do not install the UPS system where it would be exposed to direct sunlight or near heater.
- Don't open UPS or damage battery inside. The liquid spilled from the battery is strongly poisonous and do harmful to body!
- Do not attempt to dispose of UPS by burning them. This could cause battery explosion.
- Do not pull cable and socket by force
- If the UPS is unusual it emits smell, overheats or changes color and shape depending if the immediately visible disconnect the plug.
- Don't use cleaning detergents and chemicals





TUNCMATIK MÜŞTERİ HİZMETLERİ

0850 201 6 877

For Turkey Only



Üretici & İthalatçı / Manufacturer & Importer:

Tunçmatik Elektrik Malzemeleri Sanayi ve Ticaret A.Ş.

Yenişehir Mah. İmar İskan Blokları Cad. No: 1BU

34779 Ataşehir, İstanbul, Turkey

T: +90.216.314.51.51

F: +90.216.420.35.29

info@tuncmatik.com



tuncmatikgroup
power solutions



tuncmatik

www.tuncmatik.com pure power